

130hp
Payload: 4999kg
Maximum lift height: 8.1 m

LOADALL | 550-80 WASTEMASTER



A Product of Hard Work



JCB's most productive Wastemaster Loadall... Ever



In 1977, JCB pioneered the versatile telescopic handler and we continually strive to improve the concept so that we remain at the forefront of performance and innovation. The new 550-80 Wastemaster is the latest product of this drive to be the best.

The 550-80WM has been designed and developed in response to customer demand. You told us you wanted to lift heavier loads – we give you our highest capacity loadall yet, capable of lifting a massive 4.99 tonnes and with a maximum lift height of 8.1 metres. This machine is perfect for bringing even greater levels of productivity and business profitability to rehandling applications.

Up until now our Wastemaster loadall range offered a maximum 4.1-tonne payload. The 550-80WM offers a significant increase on this, adding huge productivity to a range of machines already renowned for their world-beating abilities. A number of JCB attachments have been developed to work in harmony with the 550-80WM to further increase its versatility.

But the 550-80WM is not just about doing more. It's also about doing more for less. So we've invested in new technology and features – new efficient hydraulic circuits, new transmission design and new braking systems to drive down operating costs by reducing fuel consumption.

Above all the 550-80WM is an integrated solution. It boasts JCB componentry and at its heart is the JCB DIESELMAX 97kW (130hp) engine resulting in more power, more torque and more productivity than ever before in a Wastemaster loadall. The machine is also supported by JCB's dedicated parts and service team, providing you with world-class back-up for maximum uptime.





Maximum productivity and economy through constant innovation

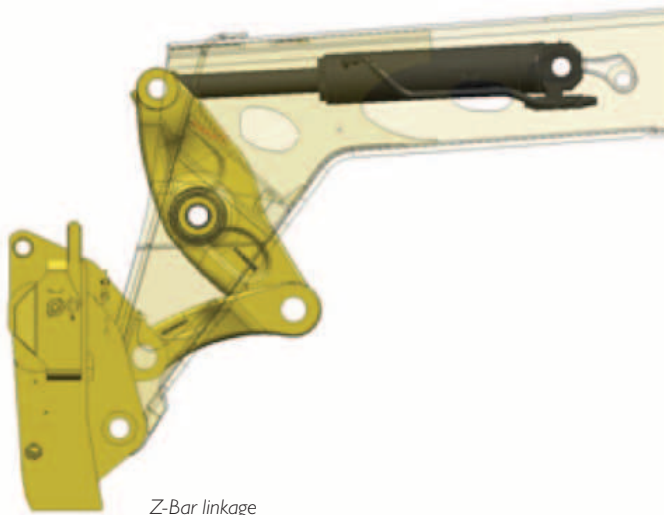
The 550-80WM boasts a number of efficiency-enhancing features. Among these is the robust Z bar linkage which results in a massive 6.5 tonnes of breakout force, maximising bucket fill and therefore productivity in rehandling applications.

Efficient hydraulics are the key to getting more done on a loadall. The 550-80WM incorporates a regeneration system which uses gravity to aid boom lower and boom retract functions, saving energy and fuel. The system also contributes to faster cycle times and consequently more efficient operations. The engine cooling fan reacts to ambient temperatures and adjusts its speed automatically, reducing energy consumption. In addition, the fan can be reversed to remove dust and debris from the radiators to maintain cooling pack performance.


The JCB DIESELMAX 97kW (130hp) engine is the most powerful power unit ever fitted to a Wastemaster loadall, generating a massive 532 Nm of torque. This underlines our commitment to making this the most productive loadall ever offered to the waste and recycling industries. The machine also boasts a JCB-manufactured Powershift transmission, with fingertip control of forward and reverse on the multi-function cab-mounted joystick.

The 550-80WM also offers an innovative transmission dump feature which is activated when the brake pedal is depressed. This disconnects the transmission when the brakes are used, thereby maximising power to the hydraulic functions and improving productivity. In addition, the braking system boasts automotive-inspired power brakes offering reduced pedal effort and travel. A new high back-off feature ensures minimal brake drag while travelling, leading to further improvements in fuel economy.

We are confident that the 550-80WM loadall achieves new levels of productivity and efficiency. Our highest capacity loadall ever - 4.99 tonnes and a maximum lift height of 8.1 metres - this machine answers customer demands for increased payloads and lower fuel consumption, whilst maximising versatility to create an all-round business asset.



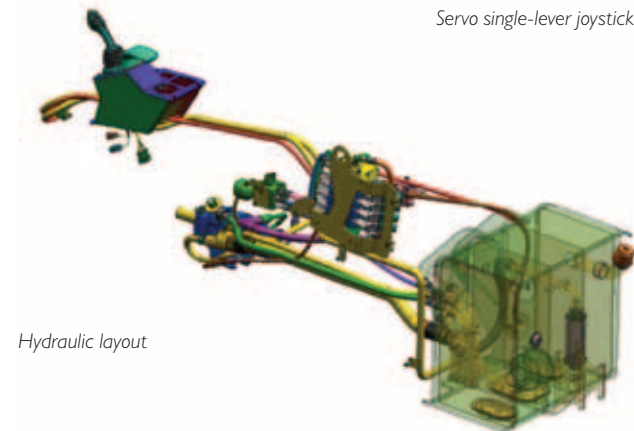
Z-Bar linkage



Hydraulic cycle times (unladen)	
Lift	7.4 seconds
Lower	5.9 seconds
Extend	8.3 seconds
Retract	5.9 seconds
Bucket dump	2.8 seconds
Bucket crowd	3.0 seconds



Servo single-lever joystick



Hydraulic layout



A productive driver is comfortable and in complete control

Comfort and productivity normally go hand in hand - if operators are thrown around, are too hot or too cold, or can't see clearly, productivity will be compromised.

The 550-80WM offers best-in-class comfort with one of the largest cabs in the industry and a highly efficient ventilation system with air conditioning and extra dust filtration. In addition, an adjustable suspension seat and steering column contribute to a comfortable and therefore productive driving position. Already class-leading noise levels are reduced further with the adoption of a variable speed engine cooling fan which automatically adjusts its speed dependent on engine and ambient air temperatures.

The cab conforms to ROPS ISO 3471 and FOPS ISO 3449 and puts the operator firmly in control. Ergonomic and intelligent switch and dial arrangements make for intuitive and relaxed operation, while the cab-mounted single-lever joystick controls all of the primary machine functions. For added safety and machine protection, we have also made it easier for operators to see what they are doing. A low boom pivot point, large cab windows and angled roof protection bars all help to provide all-round visibility for driver safety and machine protection.





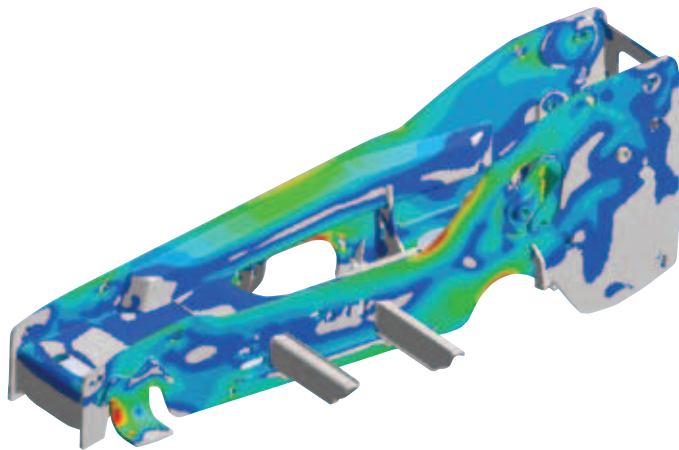
Incredible strength and quality for unrivalled durability and reliability

At JCB we take pride in everything we do. This pride means that we invest in quality at every stage, from design to manufacture and from assembly to aftersales, with our legendary back-up.

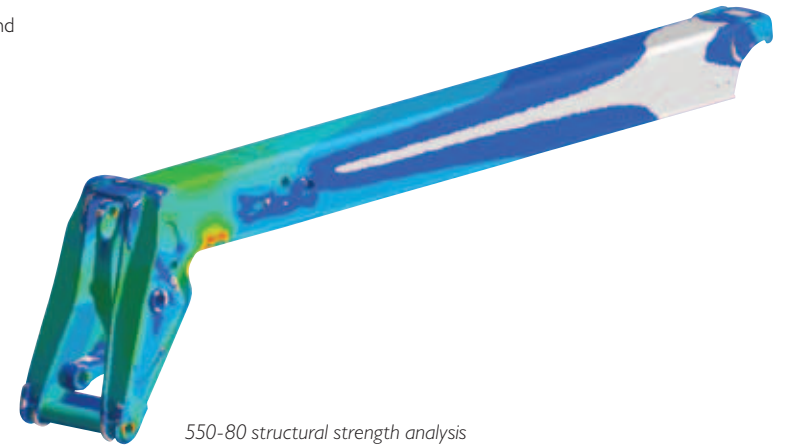
This focus on quality drives our strategy of vertical integration – the chassis, engine, transmission, hydraulic rams and cab are all designed and built by JCB to work perfectly together so there's no compromise in performance at any stage.

Our drive for quality can also be seen in our process of continual innovation and improvement. The chassis, for example, is a one-piece fully welded design using 25mm thick steel side plates for maximum strength and durability – essential for operating in arduous waste and recycling applications. The boom is mounted low in the chassis to provide maximum over-the-shoulder visibility. It also features increased width and depth over other Wastemaster loadalls to guarantee additional strength and rigidity, while the boom nose has been increased in size for heavy-duty, long-lasting and powerful performance in re-handling tasks.

With a robust Z bar linkage, heavy-duty axles, integral hydraulic tank and one-piece chassis, this loadall is Wastemaster tough; it's built to last.



550-80 structural strength analysis



550-80 structural strength analysis



Comprehensive operator and machine protection for unrivalled safety and productivity

No-one understands the difficult operating environments that exist in waste applications better than you. And no-one goes further than JCB to ensure the operator stays protected, comfortable and productive. In addition, a range of features help to reduce costly damage to the machine that can be caused by falling material and restricted sites. At the heart of every Wastemaster machine in the range is our understanding of the issues you face. From the hazards of handling dangerous, awkward or bulky materials to the pressures of forthcoming legislation, we are continually developing new solutions to meet your needs.

The 550-80WM includes all of the features that are available on other Wastemaster loadalls in the range:

To protect the operator: extra cab filtration and air conditioning help remove airborne dust and particles from the cab environment, while roof and screen guards protect the operator from falling material.

To protect the bystander: a reversing alarm, a pair of external rear view mirrors and additional worklights help make the machine more visible to bystanders and also help the operator to identify nearby hazards and obstacles.

To protect the machine: belly guards, fuel tank guards, boom wipes, light guards and a steel lower door panel are all fitted as standard to offer extra machine protection. Further options designed to protect the machine include an exhaust heat shield and puncture-proof, semi-solid tyres.

To protect the engine: an aspirator air cleaner protects the engine from dust ingress, while electronic monitors constantly check for any water in the fuel. Wide core radiators and a reversing fan are fitted as standard to maintain engine cooling whatever the environment and application.



Unrivalled versatility to help you get more from your machine

When every part of your machine works in harmony, the result is superlative performance. JCB attachments are all designed and manufactured to be perfectly matched to your machine. We use only top quality components combined with engineering expertise and exhaustive testing to ensure reliability and durability.

We understand that applications in the waste and recycling industry demand specialist options and attachments. Our range is designed to allow your Wastemaster loadall to tackle any task in the sector. From puncture-proof tyres and belly guards, to sweeper collectors and buckets with top grabs, our options and attachments work to maximise the versatility and profitability of your 550-80 Wastemaster loadall - real solutions that address real customer needs.

All of these features are designed to reduce downtime and therefore increase overall productivity. In addition, to ensure that the machine is always operating with the correct attachment for the job, the JCB quickhitch system allows quick and easy changeovers, thus ensuring the best possible utilisation of your 550-80 Wastemaster.



HEAVY-DUTY GENERAL BUCKET

Heavy-duty, high-capacity, general-purpose bucket for use in all waste handling and construction applications. Reversible bolt on toe plate for bucket longevity.



HEAVY-DUTY RE-HANDLING BUCKET

Heavy-duty general-purpose re-handling bucket for use in all types of waste and recycling applications. Reversible bolt on toe plate protects the bucket from wear and ensures attachment longevity.



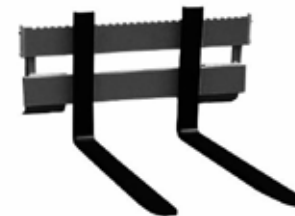
HEAVY-DUTY WASTE BUCKET

Heavy-duty waste bucket complete with top grab for handling all types of general waste. Top grab ensures secure bucket loading and can be one piece or split. All brackets and hoses included. Reversible bolt on toe plate ensures bucket longevity.



HEAVY-DUTY GRAPPLE

Heavy-duty grapple for handling scrap metal of all dimensions. Can also be used for handling large timbers, concrete blocks or rocks.



PALLET FORKS

Pallet forks for handling all types of palletised loads. Optional load guard to prevent spillage. Fork positioning and sideshift for handling awkward loads. Fork rotators for emptying skips and bins.

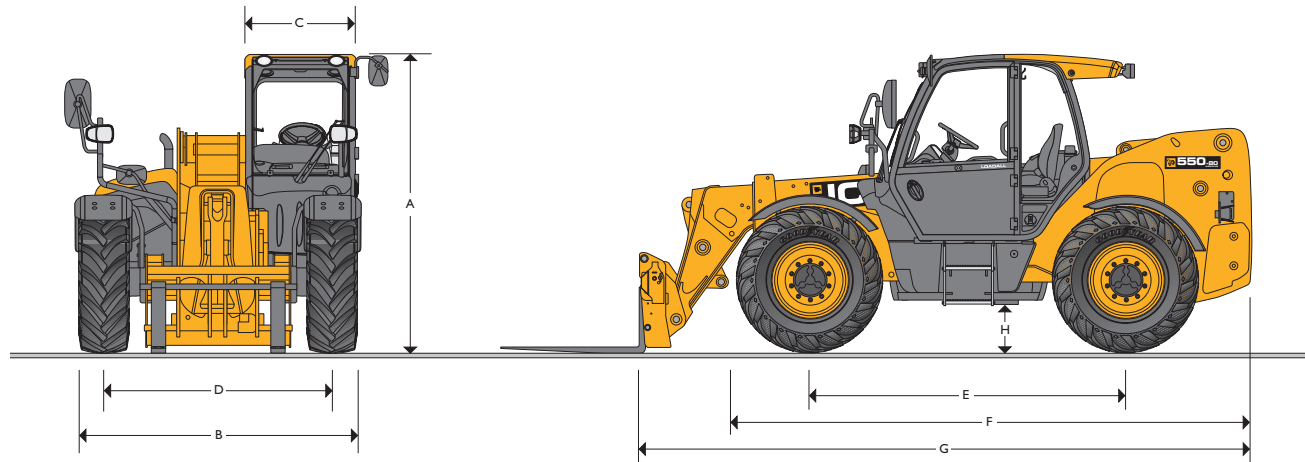


HEAVY-DUTY FORK

Heavy-duty fork and top grab for handling all types of loose material in general re-handling applications and also green waste in composting operations. Top grab can be one piece or split. Supplied with all brackets and hoses.



MAX. PAYLOAD: 4999kg (11001 lb)
 MAX. LIFT HEIGHT: 8.1 metres (26ft 7in)



STATIC DIMENSIONS

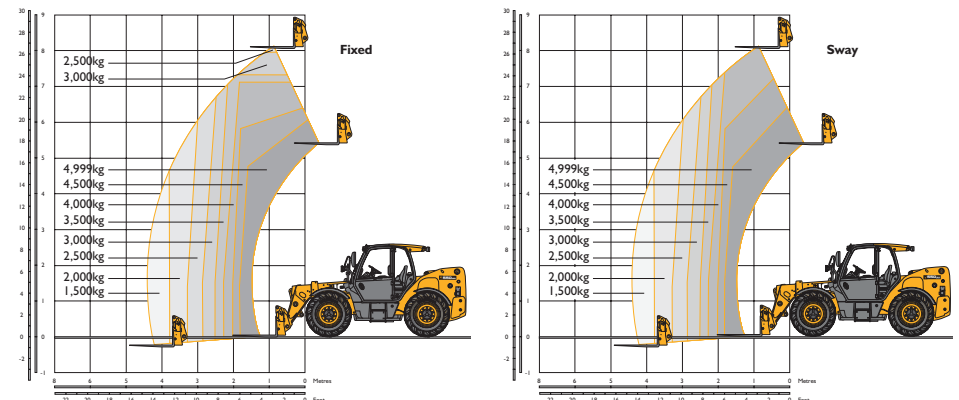
A Overall height	m (ft-in)	2.66 (8-8)
B Overall width (over tyres)*	m (ft-in)	2.5 (8-2)
C Inside width of cab	m (ft-in)	0.94 (3-1)
D Front track	m (ft-in)	1.98 (6-6)
E Wheelbase	m (ft-in)	2.75 (9-0)
F Overall length to front of tyres	m (ft-in)	4.42 (14-6)
G Overall length to front of carriage	m (ft-in)	5.27 (17-3)
H Ground clearance	m (ft-in)	0.40 (1-4)
Carriage rollback angle	degrees	47.0
Carriage dump angle	degrees	33.0
Weight	kg (lb)	10150 (22377)
Tyres		480/80R26

*Dependant upon tyre specified.

ENGINE

Manufacturer		JCB
Displacement	litres (in ³)	4.4 (269)
No. of cylinders		4
Bore size	mm (in)	103 (4.05)
Stroke	mm (in)	132 (5)
Aspiration		TCA
Power rating		
Power @ 2200rpm	kW (hp)	97 (130)
Torque rating		
Torque @ 1500rpm	Nm (lb/ft)	532 (392)

LIFT PERFORMANCE



LIFT PERFORMANCE

Maximum lift capacity	kg (lb)	4999 (11001)
Lift capacity to full height	kg (lb)	2500 (5512) Fixed 4000 (8818) Sway
Lift capacity at full reach	kg (lb)	1500 (3307)
Lift height	mm (ft-in)	8.1 (26.7)
Reach at maximum lift height	mm (ft-in)	0.92 (3-0)
Maximum forward reach	mm (ft-in)	4.47 (14-8)
Reach with 1 tonne load	mm (ft-in)	4.47 (14-8)
Placing height	mm (ft-in)	7.45 (24-5)

Complies with stability test EN 1459 Annex B.



TRANSMISSION

JCB powershift transmission incorporating torque converter, bevel box and a 3-speed powershift gearbox in one resiliently mounted unit. A combined steering column mounted switch incorporating directional control and 3 forward and 3 reverse powershift gears. Travel speed 22kph (dependant upon tyre selection). Permanent 4-wheel drive. Switchable automatic transmission disconnect.

Front and rear drive axles: Epicyclic hub reduction drive/steer axles with torque proportioning differentials.

BRAKES

Service brakes: Hydraulically activated power brakes, self-adjusting, oil-immersed in-board multi-disc type on front and rear axles.

Parking brake: Hand operated oil immersed disc type.

BOOM AND CARRIAGE

Boom is manufactured from high tensile steel. Low maintenance, hard wearing pads. JCB Q-fit self-levelling carriage with lever operated pin locking accepts pallet forks and a wide range of attachments. One boom end auxiliary hydraulic service fitted as standard.

SAFETY CHECK VALVES

Fitted to carriage tilt, telescopic and boom lift rams.

SERVICE CAPACITIES

Fuel tank	litres (UK gal)	146 (32.1)
Hydraulic tank	litres (UK gal)	112 (24.6)
Coolant	litres (UK gal)	23 (5.1)

ELECTRICS

12 v negative earth. 110 AH battery. Full road lighting. Reversing light. Direction indicators. Hazard warning. Reverse alarm.

STEERING

Hydrostatic power steering with power track rods on both axles.

Three steer mode options: front-wheel steer; all-wheel steer; crab steer: operated from in the cab by a selection switch, with automatic alignment.

HYDRAULICS

Operating system pressure	bar (psi)	260 (3770)
Main hydraulics	ltrs/min	140
Pump		Variable
Loader controls		Cab mounted single lever joystick
Hydraulic cycle times		seconds
Lift		7.4
Lower		5.9
Extend		8.3
Retract		5.9
Bucket dump		2.8
Bucket crowd		3.0

DELUXE CAB

Quiet, safe and comfortable cab conforms to ROPS ISO 3471 and FOPS ISO 3449. Tinted glass all-round with laminated front and roof screen. Roof bars, front, rear and roof screen wash/wipe and heater/screen demister. Opening rear window. Audio-visual warning system for coolant temperature, water in fuel, engine oil pressure, air cleaner, battery charge, transmission oil temperature and pressure. Brake charge, hourmeter and road speed indicator. Engine temperature, fuel gauge and clock. Adjustable steer column with stalk bar powershift change and forward reverse shuttle. Floor mounted throttle pedal. Adjustable deluxe suspension seat with adjacent park brake. Automatic eye level audio-visual load moment indicator warning system receiving a signal from a load sensor on the rear axle. This system continuously monitors the machine's forward stability and leaves the operator in control at all times.

Hydraulic controls:

Cab mounted single lever servo joystick, incorporating forward/neutral/reverse, with progressive extend/retract and auxiliary incorporating constant flow facility.

MACHINE SPECIFICATION

Front and rear working lights, steel lower door, roof and screen guard, belly guards, fuel tank guard, headlight guards, variable speed reversing fan, boom nose cover, under boom guard, fire extinguisher, air conditioning, wide core radiator.

OPTIONS AND ACCESSORIES

Options: Rotating flashing beacon, air suspension seat, roof and front screen blind, exhaust guard, radio kit, 2-speed and intermittent front wash/wipe, puncture proof semi-solid tyres, high flow auxiliary, 2nd boom auxiliary, carriage options available – contact your local dealer.

Attachments: Contact your local dealer for details of the comprehensive range.

Adaptive load control for EU territories conforms to EN15000.

Your machine – working efficiently, secure and in good health

JCB LiveLink and Guardian
are the key to all three



As part of our dedication to looking at new, innovative ways to help you get the most out of your machine, our latest development is JCB LiveLink: an advanced machine monitoring system that enables you to better protect your investment and accurately monitor and improve machine performance.

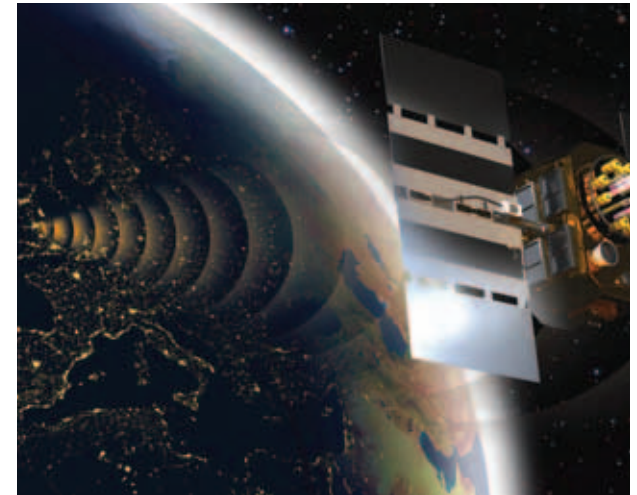
JCB LiveLink is a software system that enables JCB owners to monitor and manage their machines remotely. All you need is a PC connected to the internet. The LiveLink computer is built into the machine where it collects information from a number of sensors. This information is sent, using mobile communications technology, to JCB's secure data centre. Machine management information is then displayed to users via the LiveLink website, by email or via mobile phone.

By providing you with information on the usage and productivity of your fleet, JCB LiveLink enables you to keep track of each machine's efficiency, ensuring that you get the best value for money possible.

By providing information on the location, movement and activity of machines, the system can also assist in ensuring machines are operated at the correct times and helps to protect them from theft. And, JCB LiveLink helps machine owners to confirm that their machines are well maintained and in good health without having to travel around work sites inspecting machines.

In response to increasing concerns regarding machine security, we now also offer JCB Guardian as an option on every new JCB machine. JCB Guardian is a package of theft protection and monitoring systems that includes LiveLink telemetry along with *CESAR identification, immobiliser technology and a host of optional locks and guards. It's your peace of mind solution that can also result in considerable insurance premium savings.

**Territory specific*



Flexible aftercare solutions from JCB Assetcare

JCB Assetcare is a range of flexible service options designed to ensure you get the very highest standards of machine servicing, no matter what your budget. It guarantees you the optimum level of aftersales support, with highly skilled, factory-trained engineers using genuine JCB parts and lubricants to maintain maximum machine performance.

This allows your machine to be covered to maximise uptime and profitability throughout its operating life.

*“For complete peace of mind
and cost predictability
choose JCB Assetcare.”*

JCB Assetcare offers you the following options, which can be tailor-made to meet your specific requirements including excellence as standard:

For complete peace of mind and total budget predictability, your JCB dealer can offer a **Full Repair and Maintenance package**, with a fixed monthly sum covering all regular maintenance and necessary repairs including **Flexicare** for excavators and wheeled loading shovels, to give a pay by the hour alternative.

A **JCB Service Agreement** allows you to plan and manage your maintenance budget over a period of hours, or years of machine use, as determined by you. The price is maintained for the duration of the agreement and includes all parts, lubricants, labour and travel to maximise your machine performance.

JCB Sure Price Service (pay as you go) includes all genuine JCB lubricants, filters, greases and other parts and is carried out as you require it. The all-inclusive price also covers labour, 100 point check and any travel. Service intervals are hours based (usually every 500 hours) and no prior agreement is required; simply advise your dealer when the machine reaches the recommended service interval for great value for money.

JCB Machinery Protection Plan protects you against any unexpected failure for up to 2, 3, 4 or 5 years or up to 10,000 hours depending on machine type. You can take up a Machinery Protection Plan at any time during the first three months of ownership, and the package is transferable on the initial machine sale. Coverage options are 500, 1000, 1500 or 2000 hours per year (model dependent).

JCB Driveline Protection Plan – sign up to a Service Agreement on backhoe or loadall mechanical transmission machines and get FREE Driveline Protection for every 1,000 hours you commit to (covers engine, transmission and axle).

For the full terms and conditions of the above programmes please speak to your local dealer.





JCB Sales Limited, Rocester, Staffordshire, United Kingdom ST14 5JP. Tel: +44 (0)1889 590312 Email: salesinfo@jcb.com

Download the very latest information on this product range at: www.jcb.com

©2009 JCB Sales. All rights reserved. No part of this publication may be reproduced, stored in a retrieval system, or transmitted in any form or by any other means, electronic, mechanical, photocopying or otherwise, without prior permission from JCB Sales. JCB reserves the right to change specifications without notice. Illustrations and specifications shown may include optional equipment and accessories. The JCB logo is a registered trademark of J.C. Bamford Excavators Ltd.



www.carbonbalancedpaper.com
unique print number