

# D5

## TRACK-TYPE TRACTOR



---

**Net Power (1,770 rpm)**

ISO 9249/SAE J1349

127 kW (170 hp)

ISO 9249/SAE J1349 (DIN)

172 mhp

**Operating Weight Ranges**

VPAT

17 180-19 170 kg (37,875-42,263 lb)

Push Arm

17 340 kg (38,228 lb)

Cat® C7.1 Engine meets U.S. EPA Tier 4 Final/EU Stage V/Japan 2014/Korea Tier 4 Final emission standards.



The new **Cat D5** succeeds the renowned D6N with superior performance and the broadest choice of technology features to help you get the most from your dozer. Nimble and responsive, it has power for dozing and finesse for grading. Fully automatic transmission gives you seamless acceleration, so you can get the job done quickly.

# THE NEW CAT<sup>®</sup> D5

PERFORMANCE AND  
TECHNOLOGY



**D5** 127 kW/170 hp      19 170 kg/42,263 lb

**D6N** 124 kW/166 hp      18 346 kg/40,446 lb

## NEW NAMES, SAME WORLD-CLASS PERFORMANCE

The update from D6N to D5 is part of an effort to make all Cat dozer model names simpler. Over the next couple of years, the Cat dozer range will be renamed from smallest to largest – D1 to D11 – with one model per size class and no more letter modifiers like “N,” “K,” “T.”

While the number may be different, the D5 gives you all the advantages of the D6N and so much more. The D5 delivers more weight and horsepower, more technology and more performance, helping you make the most of your equipment investment.



---

## BEST-IN-CLASS PERFORMANCE

Nimble, responsive and maneuverable with a fully automatic transmission for seamless acceleration, fast cycle times and long-term durability. New cab sets the standard for visibility, comfort, productivity.

---

## UP TO 50% MORE PRODUCTIVITY WITH CAT TECHNOLOGY

A broad range of Grade technology choices and new operator assist features help boost productivity so you get the most from your machine. Remote Flash and Remote Troubleshoot help improve jobsite efficiency by saving you time.

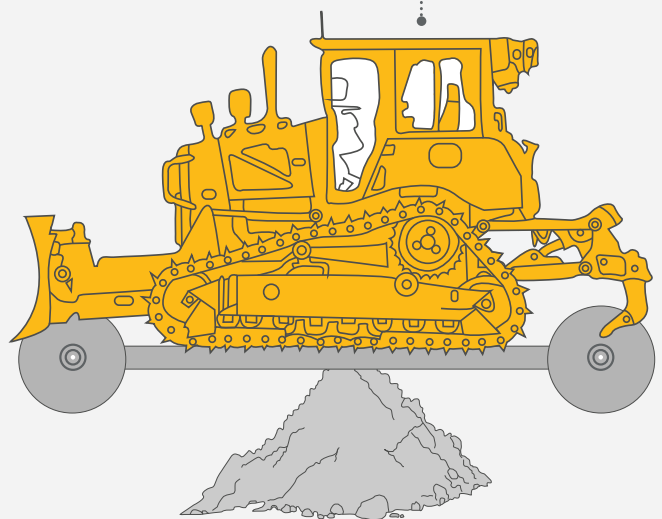
---

## MORE POWER TO WORK

Goes beyond D6N with more power and added performance to get the job done. Stronger structures offer more durability and uptime, while a new purpose-built push arm dozer helps you take on heavier work.

## BALANCED WORKLOAD

MAXIMIZE YOUR EQUIPMENT INVESTMENT WITH ONE MACHINE **BALANCED FOR DOZING AND GRADING**





## BIGGER, STRONGER

Ideally balanced for both dozing and grading, the D5 delivers more weight and horsepower for even more power and versatility. Take on even bigger tasks with new purpose-built push arm configuration.



## FULLY AUTOMATIC

Experience powershift durability with the seamless acceleration of a fully automatic 3-speed transmission. Just set your desired ground speed and the dozer adjusts for maximum fuel efficiency and power to the ground.



## BEST-IN-CLASS GRADING

Balanced, nimble and fast, the D5 gives you agility and ideal machine balance so you can achieve high quality grades quickly. A variety of technology features help you grade better and faster, with less operator input.



## TURN TIGHTER

Improved steering performance gives you a tighter turning radius and quicker cycle times, so you can work faster and steer around obstacles on the job site with ease.



**SPREAD MORE, GRADE MORE**  
**POWER TO PUSH YOU FORWARD**

OUTPACE THE COMPETITION

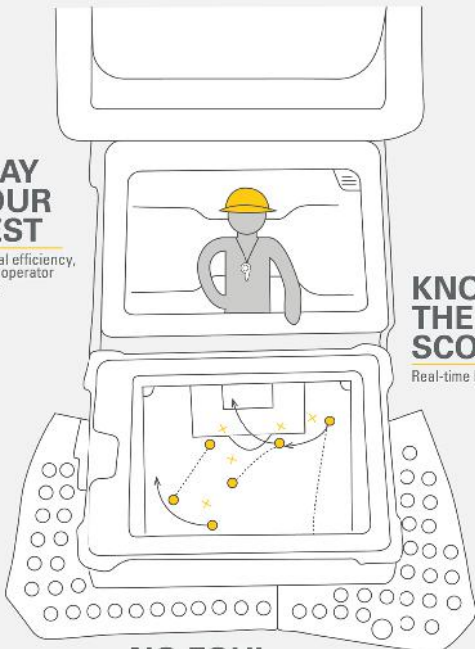
WORK SMARTER. WORK SAFER.



CAT® TECHNOLOGY IS LIKE HAVING A  
**COACH IN THE CAB**

**PLAY  
YOUR  
BEST**

Optimal efficiency,  
fewer operator  
inputs



**KNOW  
THE  
SCORE**

Real-time Feedback

**NO FOUL**

Save rework, time, materials

An unprecedented selection of technology choices help you make the most of your equipment investment.

- + Grade technologies help operators of varied skill levels hit target grade faster and more accurately.
- + New operator assist features work together behind the scenes to help make machine operation easier.
- + Cab offers optimal interior mounting locations that make it simple to install the grade control system of your choice.
- + Link technologies, remote services and tools like the Cat App help connect you to your equipment to help save time and money on service and maintenance.
- + Machine Security System gives you the option to unlock your dozer using a display Passcode or Bluetooth® key.
- + Cat Command for Dozing offers remote control operation for enhanced safety and greater productivity.

CAT GRADE TECHNOLOGY

# BOOST YOUR PRODUCTIVITY

## NO GPS SIGNAL? NO PROBLEM

Cat Grade with Slope Assist automatically maintains operator's pre-established blade position without a GPS signal. Put it to work building pads, creating simple design plans on-the-go, or working where GPS is unavailable. Slope Assist works seamlessly alongside 3D GPS systems.

## FIRST PASS TO FINISH GRADE

Factory integrated Cat Grade with 3D uses a GPS signal to automatically adjust blade movements – both lift and tilt – as you follow the design. Save time, labor and materials on all phases of the job. The user-friendly 10-inch (254 mm) touchscreen grade display works like a smart phone, so it is easy for operators to pick up quickly. Antennas are integrated into the cab roof for even better protection.

## READY WHEN YOU ARE

With Attachment Ready Option (ARO), your dozer comes from the factory ready for simple installation of a grade control system. You will also find a mounting location and connections in the cab to make it easier to utilize your technology systems. ARO with Assist bundles the grade-ready option with features that work in the background to help operators get more done in less time.





## READY TO HELP

### OPERATOR ASSIST FEATURES

#### SMOOTH OPERATOR

---

Stable Blade has been improved to make it even easier to get smoother surfaces faster when operating manually. Works seamlessly with operator blade inputs to help reduce imperfections and produce a smoother surface.

#### MAKE THE MOST OF EVERY PASS

---

AutoCarry automates blade lift to help you get more consistent blade loads with each pass and reduce track slip. Works seamlessly with Grade with 3D but can now also be utilized when the dozer is not running in automatics.

#### OPTIMAL BLADE LOADS

---

Blade Load Monitor gives you real-time feedback on current load versus the optimal blade load based on your ground conditions. Actively monitors machine load and track slip to help you reach optimal pushing capacity.

#### KEEP PUSHING FORWARD

---

Save time, effort, fuel and track wear. If high track slip is detected, Traction Control temporarily reduces track power so the operator can adjust blade load and limit the track slip.

# ENHANCED POWER TRAIN CONTROL

# TOUGH OUTSIDE

# SMART INSIDE

Steering and slope work just got easier. Advanced controls automatically manage the power train and brakes to help operators experience better steering control and to maneuver more easily on slopes. No extra operator inputs to think about – the built-in features just work in the background.



---

## HELP ON HILLS

**Hill Descent Control** maintains preselected machine speed, without using the service brake pedal, for added control when working downhill. **Hill Hold** automatically engages the brakes to hold position when in neutral on a slope.

---

## PRECISE CONTROL

Use the **Decel Brake Pedal** to control machine speed all the way to a complete stop, or for smooth inching control.

---

## PINPOINT TURNING

Turn tighter when spreading dirt or working in narrow spaces. **Steering Radius Control** uses steering and decel pedal input to automatically downshift for a tighter turning radius and more maneuverability.





## UNPRECEDENTED EASE OF OPERATION

No need to worry about shifting gears to get the most from the machine – just choose your ground speed and go. The dozer automatically optimizes based on load for greatest productivity and fuel efficiency.

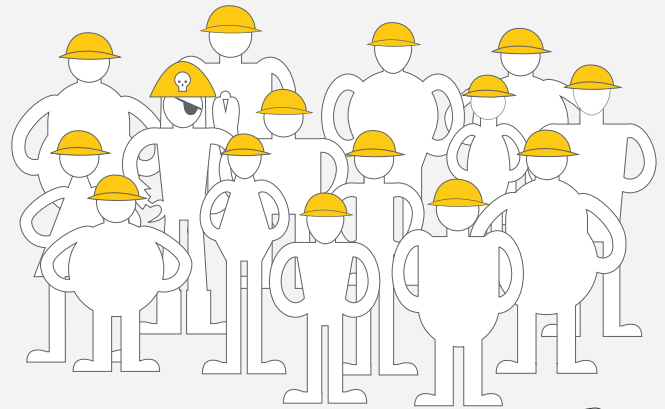
## WORK SPACE

Step in to a spacious cab that resets the industry standard for comfort and visibility. A wider air-suspension seat gives you plenty of adjustments. Enjoy more storage space, along with updated heating/cooling to help keep you more comfortable and reduce window fogging/frosting too. New powered pre-cleaner option improves cabin pressurization to help keep out more dirt.

## OPERATOR-FRIENDLY DISPLAY

New 10-inch (254 mm) touchscreen is easy to use, with a great view of machine settings, high-definition rearview camera and Slope Indicate/Slope Assist screens. Key Features button gives you an overview of machine features, along with some helpful operating tips.

## A CAB EVERY BODY CAN LOVE

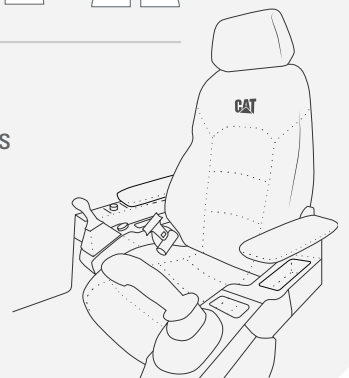


13 Seat Adjustments\*

4 Arm Rest Adjustments

**PLUS MORE SPACE,  
MORE GLASS AREA  
AND MORE STORAGE**  
add up to customized  
for all-day productivity

\* Premium seat



# SEE YOUR WAY TO MORE PRODUCTIVITY

More visibility around the dozer means you can work with more confidence and precision. Easy machine access saves time and helps make the jobsite safer.



## BETTER VIEW

Redesigned cab with integrated Rollover Protective Structure (ROPS) has about 15% more glass area to give you better all-around visibility. A steeper hood angle gives you 30% better forward visibility to the blade and work site.



## EXTRA EYES

A high-definition rearview camera is standard. It shows prominently in the main display and includes back-up lines to help guide you.



## EASY ACCESS

Standard rear ladder puts fueling, filter changes and rear window cleaning in easy reach. Ground-level access to optional fast fuel fill and maintenance points. Grab rail on both sides of cab roof and tie offs add to your safety.

# LOWER MAINTENANCE COSTS

## LESS MAINTENANCE TIME



### GET BACK TO WORK

Grouped service points, modular component design and easy access to routine maintenance points save you time every day. Quick-access floor plate option gives you toolless access for easier belly pan clean out. If needed, the cab can be removed in about 30 minutes, compared to four hours on previous models.

### REDUCE UNDERCARRIAGE COSTS

Heavy Duty Extended Life undercarriage – HDXL with DuraLink™ – offers up to 20% more seal life in high-impact conditions. Or choose new Cat Abrasion undercarriage for high-abrasion, low-impact jobsites. New design offers double the seal life and eliminates bushing turns, reducing your costs by up to 50% per hour compared to traditional undercarriage.

### SPEND LESS

Heavier, more robust machine helps increase uptime and reduce overall operating costs. Extended filter life and longer-life LED lights help save you time and money. Optional reversible fan helps remove debris while you work, saving cleanout and maintenance time.

### GAIN DURABILITY

Hydraulic and electrical lines running to the blade are guarded for better protection. More robust track roller frame gives you added durability to take on heavier work.

*All comparisons to previous model D6N.*

# CAT LINK TECHNOLOGY

## TAKES THE GUESSWORK OUT OF MANAGING YOUR EQUIPMENT

**Cat Link** telematics technology helps take the complexity out of managing your jobsites by gathering data generated by your equipment, materials and people and serving it up to you in customizable formats.

### **CAT PRODUCT LINK™/VISIONLINK®**

Product Link collects data automatically from your assets – any type and any brand. Access information anytime, anywhere with VisionLink – and use it to make informed decisions that boost productivity, lower costs, simplify maintenance and more. Satellite and/or cellular subscriptions are available.



### **REMOTE SERVICES**

The Cat App helps you manage your assets – at any time – right from your smartphone. See fleet location and hours, get critical required maintenance alerts and even request service from your local Cat dealer.

- + **Remote Flash** – get software updates remotely.
- + **Remote Troubleshoot** – remote diagnostic testing helps pinpoint potential issues, saving time and money.
- + **Operator ID** lets you track machine operation by individual operator using the main display and Product Link.



### **REMOTE CONTROL READY**

When dozers work in hazardous mining and earthmoving applications, the Command for Dozing option helps improve safety and efficiency. Operators control the machine using a line-of-sight console or a remote operator station. Deep integration with machine systems enables smooth, precise control for maximum efficiency and productivity.

With the line-of-sight console, take advantage of the dozer's built-in operator assist features. The remote operator station also allows full use of technology features like Grade with 3D and Slope Assist for even greater productivity.



Please consult your Cat dealer for regional availability.



EQUIPPED FOR THE JOB

# MAXIMIZE YOUR VERSATILITY

---

## PRODUCTIVITY OUT FRONT

Pick a new purpose-built push arm bulldozer with plenty of dirt moving power or a 6-way VPAT blade to maximize your versatility and grading performance.

---

## ON TRACK FOR BETTER PERFORMANCE

Choose from standard or Low Ground Pressure (LGP) configurations. Common structures for Heavy Duty and Cat Abrasion undercarriage allow you to change from one undercarriage type to the other.

---

## TOUGHER TRACTORS

Waste Handler, Forestry and Fire Fighting arrangements are purpose-built for optimal performance. Factory guarding, seals and cab features help protect your machine and operator in especially harsh conditions.

# TECHNICAL SPECIFICATIONS

See [cat.com](http://cat.com) for complete specifications.

ENGINE		
<b>Engine Model</b>	Cat C7.1	
<b>Emissions</b>	U.S. EPA Tier 4 Final/EU Stage V/ Japan 2014/Korea Tier 4 Final	
<b>Build Number</b>	17B	
<b>Power Train</b>	Fully Automatic 3-Speed	
<b>Net Power – 1,770 rpm</b>		
<b>ISO 9249/SAE J1349</b>	127 kW	170 hp
<b>ISO 9249/SAE J1349 (DIN)</b>	172 mhp	
<b>Displacement</b>	7.1 L	433 in <sup>3</sup>
<ul style="list-style-type: none"> <li>• Net power advertised is the power available at the engine flywheel when the engine is equipped with a fan, air cleaner, clean emissions module and alternator.</li> <li>• Net power is tested per ISO 9249:2007 and SAE J1349:2011.</li> <li>• All nonroad Tier 4 Interim and Final, Stage IIIB, IV and V, Japan 2014 and Korea Tier 4 Final diesel engines are required to use only Ultra Low Sulfur Diesel (ULSD) fuels containing 15 ppm EPA/10 ppm EU (mg/kg) sulfur or less. Biodiesel blends up to B20 (20% blend by volume) are acceptable when blended with 15 ppm (mg/kg) sulfur or less ULSD. B20 should meet ASTM D7467 specification (biodiesel blend stock should meet Cat biodiesel spec, ASTM D6751 or EN 14214). Cat DEO-ULS™ or oils that meet the Cat ECF-3, API CJ-4 and ACEA E9 specification are required. Consult your OMM for further machine specific fuel recommendations.</li> <li>• Diesel Exhaust Fluid (DEF) used in Cat Selective Catalytic Reduction (SCR) systems must meet the requirements outlined in the International Organization for Standardization (ISO) standard 22241</li> <li>• The air conditioning system on this machine contains the fluorinated greenhouse gas refrigerant R134a (Global Warming Potential = 1430). The system contains 1.36 kg of refrigerant which has a CO<sub>2</sub> equivalent of 1.946 metric tonnes.</li> </ul>		

SERVICE REFILL CAPACITIES		
<b>Fuel Tank</b>	315 L	83.2 gal
<b>DEF Tank</b>	16 L	4.2 gal

	OPERATING WEIGHT	GROUND PRESSURE*
<b>VPAT</b>	17 180 kg   37,875 lb	47.6 kPa   6.9 psi
<b>LGP VPAT</b>	19 170 kg   42,263 lb	32.6 kPa   4.7 psi
<b>VPAT Fine Grading</b>	17 780 kg   39,198 lb	41.4 kPa   6.0 psi
<b>LGP Folding VPAT</b>	19 440 kg   42,858 lb	32.9 kPa   4.8 psi
<b>SU</b>	17 340 kg   38,228 lb	48.2 kPa   7.0 psi
For machine with ripper, add 1290 kg/2,844 lb.		
*With SU blade, LGP with VPAT blade and no rear attachments unless otherwise specified and calculated per ISO 16754.		

BLADES	CAPACITY	WIDTH
<b>VPAT/Folding VPAT</b>	3.5 m <sup>3</sup>   4.6 yd <sup>3</sup>	3272 mm   10.7 ft
<b>LGP VPAT</b>	4.0 m <sup>3</sup>   5.2 yd <sup>3</sup>	4080 mm   13.4 ft
<b>LGP Folding VPAT</b>	4.2 m <sup>3</sup>   5.5 yd <sup>3</sup>	4080 mm   13.4 ft
<b>SU</b>	4.3 m <sup>3</sup>   5.6 yd <sup>3</sup>	3164 mm   10.4 ft
<b>SU – Narrow*</b>	—   —	3122 mm   10.2 ft
*Europe only. Width with end bits removed.		

DIMENSIONS*	VPAT	LGP VPAT	VPAT FINE GRADING	SU
<b>Track Gauge</b>	1890 mm (74.4 in)	2160 mm (85.0 in)	1890 mm (74.4 in)	1890 mm (74.4 in)
<b>Width of Standard Shoe</b>	610 mm (24 in)	840 mm (33 in)	610 mm (24 in)	610 mm (24 in)
<b>Width of Tractor</b>	2500 mm (98.4 in)	3000 mm (118.1 in)	2500 mm (98.4 in)	2500 mm (98.4 in)
<b>Machine Height</b>	3085 mm (121.5 in)	3200 mm (126.0 in)	3200 mm (126.0 in)	3085 mm (121.5 in)
<b>Length of Track on Ground</b>	2562 mm (100.9 in)	3116 mm (122.7 in)	3116 mm (122.7 in)	2562 mm (100.9 in)
<b>Length of Basic Tractor</b>	3680 mm (144.9 in)	4151 mm (163.4 in)	4151 mm (163.4 in)	3680 mm (144.9 in)
<b>With the Following Attachments, Add to Basic Tractor Length</b>				
<b>VPAT Blade, Straight</b>	1336 mm (52.6 in)	1230 mm (48.4 in)	1230 mm (48.4 in)	—
<b>VPAT Blade, Angled 25°</b>	1982 mm (78.0 in)	2049 mm (80.7 in)	1876 mm (73.9 in)	—
<b>VPAT Blade Foldable, Angled 31°</b>	2110 mm (83.1 in)	2214 mm (87.1 in)	2005 mm (78.9 in)	—
<b>SU Blade</b>	—	—	—	1423 mm (56.0 in)
<b>Ripper</b>	1044 mm (41.1 in)	1044 mm (41.1 in)	1044 mm (41.1 in)	1044 mm (41.1 in)

\*Cat Abrasion undercarriage.

Configurations and features may vary by region. Please consult your Cat dealer for availability in your area.

# STANDARD & OPTIONAL EQUIPMENT

Standard and optional equipment may vary. Consult your Cat dealer for details.

POWER TRAIN	STANDARD	OPTIONAL
Cat C7.1 diesel engine	•	
Fully-automatic 3-speed transmission	•	
Infinite ground speed adjustment	•	
OPERATOR ENVIRONMENT	STANDARD	OPTIONAL
Fully redesigned cab, sound suppressed, with Integrated Roll Over Protective Structure (IROPS)	•	
Full-color 10-inch (254 mm) touchscreen display	•	
Integrated rearview camera	•	
Premium cab with adjustable armrests	•	
Added storage areas	•	
Cloth seat	•	
Deluxe leather heated/ventilated seat		•
Communication radio ready		•
Lights – 6 LED	•	
Premium lights – 12 LED		•
Integrated warning lights		•
Powered pre-cleaner		•
CAT TECHNOLOGY	STANDARD	OPTIONAL
Slope Indicate	•	
ARO with Assist		
- Slope Assist		
- Traction Control		
- Stable Blade		•
- Blade Load Monitor		
- AutoCarry		
- Third-party Grade Control Ready		
Cat Grade with 3D		
- Full-color 10-inch (254 mm) touchscreen grade display		•
- Grade receivers and antennas		
- Grade Software Enabled Attachment (SEA)		
- ARO with Assist features		
Product Link – Cellular	•	
Product Link – Dual Cellular/Satellite		•
Remote Flash/Troubleshoot	•	
Grade Connectivity		•
Operator ID	•	
Machine Security – Passcode	•	
Machine Security – Bluetooth		•
Remote Control Ready	•	
Cat Command for Dozing		•

BLADES	STANDARD	OPTIONAL
VPAT	•	
Semi-Universal	•	
Folding VPAT		•
Waste/Landfill		•
UNDERCARRIAGE	STANDARD	OPTIONAL
Heavy Duty (HDXL with DuraLink) or Cat Abrasion	•	
SERVICE AND MAINTENANCE	STANDARD	OPTIONAL
Fast fuel fill		•
Ground-level service center	•	
High-speed oil change		•
Hydraulic fan	•	
Hydraulic reversing fan		•
Rear access ladder	•	
Quick access floor plates		•
Shovel holder	•	
Underhood work light		•
ATTACHMENTS	STANDARD	OPTIONAL
Ripper-ready rear hydraulics		•
Ripper with straight or curved shanks		•
Winch		•
Drawbar	•	
Side screens		•
Rear screen – hinged or fixed		•
Sweeps		•

**Not all features are available in all regions. Please check with your local Cat dealer for specific offering availability in your area.**

For additional information, refer to the Technical Specifications brochure available at [www.cat.com](http://www.cat.com) or your Cat dealer.



オフロード法2014年  
基準適合

For more complete information on Cat products, dealer services and industry solutions, visit us on the web at [www.cat.com](http://www.cat.com)

© 2020 Caterpillar. All Rights Reserved.

VisionLink is a trademark of Trimble Navigation Limited, registered in the United States and in other countries.

Materials and specifications are subject to change without notice. Featured machines in photos may include additional equipment. See your Cat dealer for available options.

CAT, CATERPILLAR, LET'S DO THE WORK, their respective logos, DEO-ULS, Product Link, Duralink, "Caterpillar Corporate Yellow", the "Power Edge" and Cat "Modern Hex" trade dress as well as corporate and product identity used herein, are trademarks of Caterpillar and may not be used without permission.  
[www.cat.com](http://www.cat.com) [www.caterpillar.com](http://www.caterpillar.com)

AEXQ2532-02  
Replaces AEXQ2532-01  
Build Number: 17B  
(Aus-NZ, Eur, Japan,  
Korea, N Am, Turkey)

